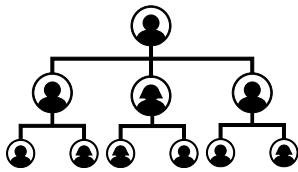




# Moorhead, Minnesota Headquarters Proposal

Women's History Library & Museum





# WHY MOORHEAD, MINNESOTA?

Our founder has long and deep roots to the Land of 10,000 Lakes. Dr. Leah “Riwo” Leach was born in Coon Rapids to Minnesota natives. There are streets and towns named after both sides of her family. She is cousins with Minnesota legend Gratia Countryman.

## Gratia Countryman (1866-1953)



- First female head librarian of Minneapolis Public Library
- Founder of the Women’s Club of Minneapolis
- Founder of the Hennepin Library System
- Introduced the first children’s reading room in the United States
- President of the American Library Association 1933-1934 during drastic cuts to libraries due to The Great Depression

## Dr. Leah “Riwo” Leach



Leah follows in Gratia’s footsteps by founding Gal’s Guide, the first women’s history lending library in the United States. Leah is an award-winning writer, filmmaker, and podcaster with multiple honorary doctorates. She has adapted her storytelling training into the unique way Gal’s Guide teaches history. She is passionate that books save lives.

Leah’s youngest child is attending MSUM.



# WE MAKE HISTORY FUN



Gal's Guide Library seeks to move operations from Indiana to Minnesota and expand to include a women's history museum.

We are a historic library. Gal's Guide is the first independent women's history lending library in the United States. There are only 7 in the world.

The library is central to what we do; books relate to our events, clubs, workshops, and podcast episodes. Most of our offerings are free. Our Galentine's Brunch is epic! Everyone is welcome at Gal's Guide. We make history fun. We don't focus on names and dates. We focus on how we can help people see the beautiful potential within themselves.

Books don't judge and neither does Gal's Guide. Your TBR (To Be Read) pile doesn't judge how long it takes for you to get to a book. Gal's Guide encourages people to serendipitously read the right book for you when the right time appears. We're here to guide you.



## MISSION

*Gal's Guide mission is to provide an independent women's history library to preserve, collect, share and champion women's achievements and lessons learned. We will act as a catalyst to creators who utilize our resources to guide others to these amazing role models who have been waiting in the shadows of history for too long.*

**NTEE P83  
Women's Center**

# PROGRAMS WE OFFER



**Lending Library**



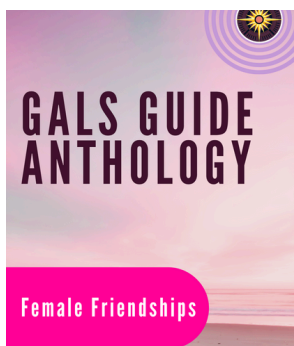
**Writing Workshops**



**Author Signings**



**Podcast**



**Anthology**



**Book Club**



**LGBTQ+ Ally Meetup**



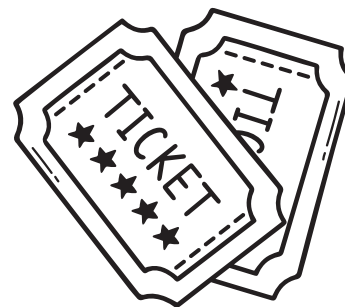
**Popcorn Gals**



**Galactic Sisterhood**



# EVENTS WE OFFER



## Galentine's

Based on the TV Show *Parks and Recreation*, we've hosted 8 great Galentine's celebrations.

## Women's History Events

We've hosted trivia nights, art shows, workshops, and feasts in celebration of women's history. It's what we do all year!



## Girl Scouts

Gal's Guide has its own patch supported by the Girl Scouts. We also host badge-earning events.

# PARTNERSHIPS

**Pacers Foundation**  
**Merchants Bank**  
**First Internet Bank**  
**Kroger**  
**Amazon Smile**  
**Nielsen**  
**Girl Scouts**  
**Girls Positivity Club**  
**Noblesville Creates**  
**Veterans Health Indiana**  
**Hamilton East Public Library**  
**Johnson County Public Library**  
**Indiana Arts Commission**  
**Indiana Humanities**  
**Noblesville Main Street**  
**Tara Mandala**  
**Indiana Writers' Center**  
**Indy Reads**  
**Indiana Comic Con**  
**Starbase Indy**  
**InConjunction Sci-Fi Fantasy Convention**  
**Hamilton County Bicentennial Commission**  
**TRIMEDX**  
**Fishers Arts Council**  
**Noblesville High School Peony's Club**  
**Second Act Foundation**  
**Noblesville Chamber of Commerce**  
**WIN - Women in Noblesville**  
**Prevail Inc.**  
**IYG - Indiana Youth Group**  
**Bell Girl Day**  
**Duval Charter School**  
**Teacher's Treasures**

Gal's Guide values its partnerships with companies, nonprofits, and state programs, recognizing that collaboration strengthens communities and expands access to knowledge and resources. Through programs like book donations, educational workshops, and themed events, we create meaningful partnerships that uplift shared missions, such as empowering youth with the Girl Scouts or promoting literacy with Indy Reads. By using books and programs to support other businesses and organizations—including initiatives with the Indiana Writers' Center and Veterans Health Indiana—we foster education, creativity, and social impact that benefits the broader community.





# AWARDS



*Noblesville Creates Award  
2024*

*Dr. Leah "Riwo" Leach  
Gal's Guide Library  
Art Leader of the Year*



*Special Congressional Recognition  
2022*

*Gal's Guide Library*

*Recognition of outstanding and invaluable service to  
the community*

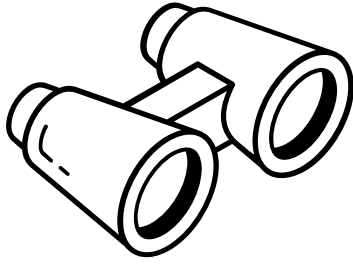
*Congresswoman Victoria Spartz (IN)*



*Advancing Noblesville Award  
2022*

*Gal's Guide Library*

*Organization of the Year*



# WHAT OUR NEW SPACE NEEDS

Our last public space was 350 sq ft. We which quickly outgrew and stored books offsite. We are a small but mighty library that would like to expand to a library + museum. We are seeking a 1,000-2,000 sq ft location.



## Visibility & Accessibility

We seek a location where Gal's Guide can have a sign out front to increase visibility. We'd also like to work with artists for women's history-inspired murals.

We have patrons who need ADA accommodations. We've had visits from elderly patrons and veterans who were part of the women's movement who could not venture up our stairs. We in turn, brought the library to them.

## Our Wish List

- Space for 15,000 books
- Meeting area
- A gift shop/checkout area
- Reading corners
- Private space for office/book processing
- About 1,000sq ft for library space
- About 1,000sq ft for museum space
- Adequate parking





# TYPES OF BUILDINGS

Perhaps you have in your town a building that could use some new life. A building that could be re-designed to be a community hub?

Gal's Guide is seeking a small but mighty space where we can bring to the community a library, museum, gift shop, and meeting space.



**Carnegie Library**



**Historic House**



**College Campus**



**Museum Grounds**



**Church**



**Retail**



**Mixed Art Space**

2000+ square feet  
Lease preferred  
March 2026 Grand Opening



# FAR-MOOR PROGRAMS

Additional programs we can bring to Fargo/Moorhead



**Women's History Museum**



**Local Art Murals**



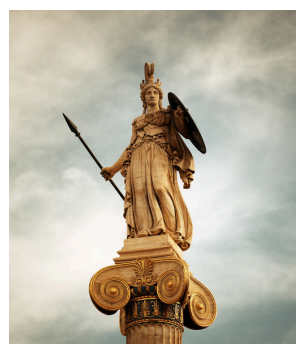
**Girl Scout Events**



**Stitch n' Bitch Club**



**Gardening Club**



**Myths & Folklore Club**



**Stargazing Nights**



**Retreats**



**... and more!**



# TESTIMONIALS



*I once drove 700 miles in one direction to visit Gal's Guide, and it surpassed my expectations! The people were wonderful! It was an incredibly welcoming space, and I hope to make the journey to visit again soon.*

**Klaire Lockheart**

Miss Art World South Dakota

[klairelockheart.com](http://klairelockheart.com)



*Gal's Guide Library lifts up women and men with a positive energy within its walls and in every fun and informative event. It's a gem that needs to expand to a larger jewel for more people to enjoy, learn and connect.*

**Angie Klink**

Author

[angieklink.com](http://angieklink.com)



*Created with a passion and that resonates in everything they do.*

**Mia Lee Roberts, fun seeker**

*Gal's Guide is preserving women's stories to inspire the greatness in all of us.*

**Lisa Cardona, retired HR director**

*Gal's Guide is an amazing group of people, and they're doing a great thing!*

**Aaron C. Packard, photographer**

*Gal's Guide is a comprehensive community resource for women's history materials and events. It's worth a visit!*

**Stephanie Koutek, content editor**

*A gem in the crown of my community, Gal's Guide offers so many activities, programs, and resources to support, educate, and inspire!*

**Anonymous**

*The people are welcoming and kind, the events are fun, and it's a great way to celebrate the contributions of women year round!*

**Sarah, executive director**

*The Gal's Guide Library consistently offers a welcoming, inclusive, and vibrant space that always feels like home. It's a space for inquisitive minds to ask questions, learn and connect.*

**Michelle Schmidt- Noblesville Youth Assistance**

*I love that Gal's Guide is such a carefully curated collection that honors female voices and cares about accessibility.*

**Anonymous**

*There literally is nothing else like Gal's Guide!*  
**Anonymous**



# CONNECT

Help us find a new home for the first women's history lending library in the United States.



Our website

[galsguide.org](https://galsguide.org)



Our e-mail

[info@galsguide.org](mailto:info@galsguide.org)



Telephone

317-900-1255



HQ address

1334 44<sup>th</sup> Avenue S, Moorhead, MN 56560



Social media handle

[@galsguidelibrary](https://twitter.com/galsguidelibrary)